



FRESCO CERAMICS

Step-by-step application

TAKING YOUR TIME,
PAYING ATTENTION TO DETAILS
AND FEELING ARTISTIC

THIS IS WHAT OUR NEW FRESCO CERAMICS STAND FOR.

Dental technicians can rediscover the passion for their profession in a very special way.

That's what makes our Fresco Ceramics so unique and we want to show you why!



Alex Lichtnering



FRESCO ENAMEL

FRESCO ENAMEL – CERAMIC PASTES FOR VENEERING ZIRCONIA STRUCTURES IN VESTIBULAR TOOTH AREAS



FRESCO ENAMEL
FLUO

KEAD4501



FRESCO ENAMEL
OPAL

KEAD4601



FRESCO ENAMEL
TRANSPA NEUTRAL

KEAD3001



FRESCO ENAMEL
TRANSPA 3

KEAD2301



FRESCO ENAMEL
TRANSPA GREY

KEAD2601



FRESCO ENAMEL
TRANSPA ORANGE

KEAD2501



MONOLITHIC SINGLE CROWN MADE OF PRETTAU® 3 DISPERSIVE® ZIRCONIA

1. Sintered,
monolithic crown

2. Characterized
with ICE Stains 3D
by Enrico Steger

3. Fresco Enamel
Fluo: control
under UV lamp

4. Final result

NOTE:

Fresco Firing n. 1
is not required for
monolithic single
crowns.



TIP:

with Fresco Enamel
Fluo, a natural
fluorescent effect can
be achieved even with
the application of a
thin layer.

SLIGHTLY REDUCED SINGLE CROWN MADE OF PRETTAU[®] 2 DISPERSIVE[®] ZIRCONIA

1. Sintered, slightly reduced crown

2. Fresco Enamel Fluo: control under UV lamp

3. Characterized with ICE Stains 3D by Enrico Steger

4. Fresco Enamel Transpa Neutral

5. Final result

SLIGHTLY REDUCED



FRESCO FIRING N. 1



GLAZE AND STAIN FIRING



FRESCO FIRING N. 2



MONOLITHIC SINGLE CROWN MADE OF PRETTAU® 3 DISPERSIVE® ZIRCONIA

*Monolithic crown
after sintering*



*Surface structure
of the monolithic crown*



*Monolithic crown
with Fresco Enamel Fluo*



SLIGHTLY REDUCED SINGLE CROWN MADE OF PRETTAU[®] 2 DISPERSIVE[®] ZIRCONIA

*Slightly reduced crown (0.3–0.7 mm)
after sintering*



*Surface structure
of the slightly reduced crown*



*Slightly reduced crown with
Fresco Enamel Transpa Neutral*



ICE STAINS 3D BY ENRICO STEGER:
ICE STAINS 3D BLUE LIGHTNING

Sintered



Glazed



Characterized



In order to exclude possible pigment accumulations and unnatural effects, we suggest to perform a light test holding the structure against incident light, and if necessary carry out a correction.



NEW!

TIP:
characterization of the incisal area with the Blue Lightning shade for a natural incisal effect.

The advertisement features a dental professional in a dark setting, wearing black gloves and using a dental tool to work on a restoration. In the top left corner, there is a white jar of 'Blue Lightning Zirkonzahn' dental restoration material. The jar has a blue and white label with the text 'Blue Lightning by Enrico Slegel' and 'Zirkonzahn' in a black box. A yellow 'NEW!' sticker is in the top right corner. Below the professional, a yellow 'TIP:' is followed by the text 'characterization of the incisal area with the Blue Lightning shade for a natural incisal effect.'





FRESCO GINGIVA

FRESCO GINGIVA VS. NATURAL GINGIVA

FRESCO GINGIVA 1

FRESCO GINGIVA 2

FRESCO GINGIVA 3

FRESCO GINGIVA 4

FRESCO GINGIVA 5

FRESCO GINGIVA 6

KEAD6301

KEAD6311

KEAD6321

KEAD6331

KEAD6341

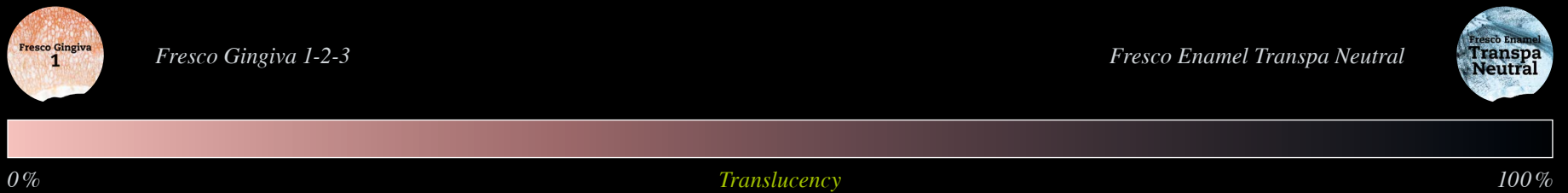
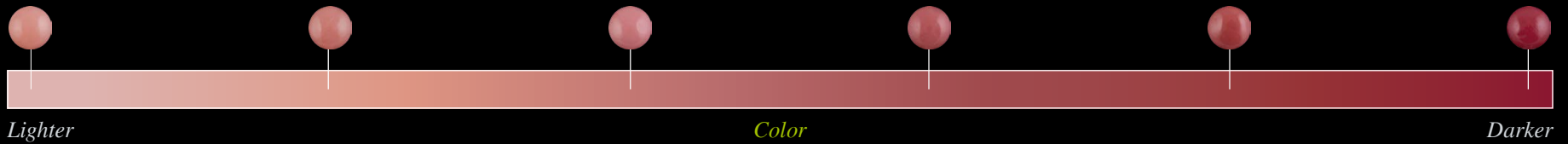
KEAD6351



UNLEASH YOUR INNER ARTIST BY MIXING AND INDIVIDUALIZING THE CERAMIC PASTES

TIP:

mix Fresco Enamel and Fresco Gingiva to create more transparent and lighter colors.



FRESCO GINGIVA – CERAMIC PASTES FOR VENEERING ZIRCONIA STRUCTURES IN THE GINGIVAL AREA

FRESCO LIQUID (10 ml)
KEAD6401

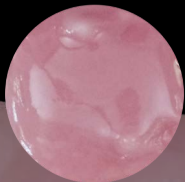
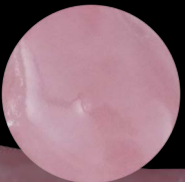


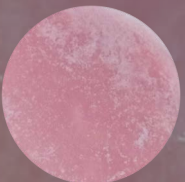

Mixing liquid to individualize the consistency of Fresco pastes and recreate the properties of conventional ceramics. For a quick and easy drying.

FRESCO GEL (10 ml)
KEAD6501

Mixing liquid to refresh the Fresco pastes and increase their modeling properties. In this way, they remain moist for a longer time and can be modeled for several hours.





| | FRESCO GEL | FRESCO LIQUID | CONVENTIONAL CERAMICS |
|-------------------|---|---|--|
| INITIAL SITUATION |  |  |  |
| DRYING PROCESS |  |  |  |
| | AFTER 14 HOURS | | AFTER 30 MINUTES |

Compared to conventional ceramics, Fresco pastes can be modeled for a longer time. Their consistency can be further personalized by adding the two mixing liquids Fresco Liquid and Fresco Gel, depending on the preferred working method.

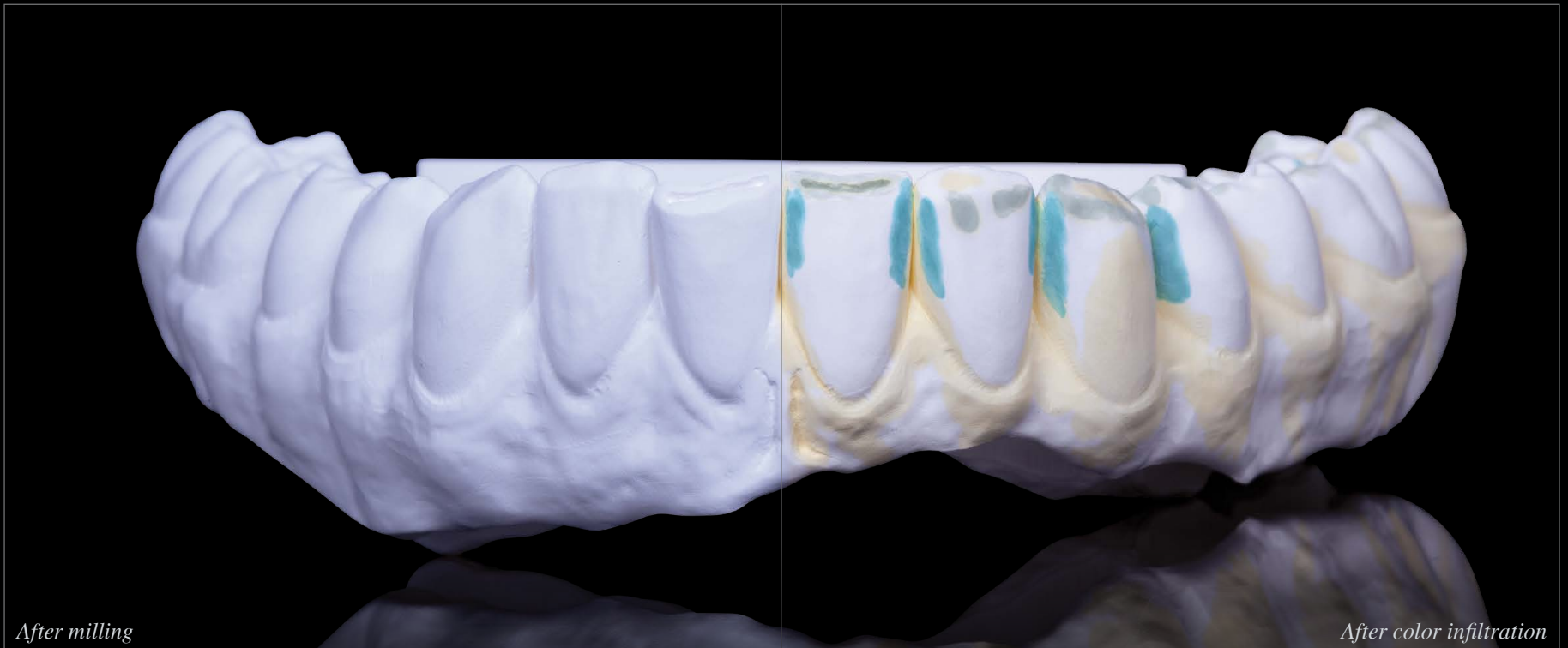




STEP BY STEP:

**RESTORATION MADE OF
PRETTAU® 3 DISPERSIVE® ZIRCONIA**

WORKFLOW EXAMPLE – MONOLITHIC LOWER RESTORATION



After milling

After color infiltration

WORKFLOW EXAMPLE – MONOLITHIC LOWER RESTORATION



WORKFLOW EXAMPLE – MONOLITHIC LOWER RESTORATION

Fresco Firing n. 1, functions as a wash and bond firing, in which the temperature is set a little bit higher to achieve a slight overfiring of the pastes. This ensures an optimal bond between the zirconia and the Fresco Ceramics.

**TIP:**

to create an optimal color base for further characterization, layer the gingival area with Fresco Gingiva 5 mixed with Fresco Liquid.

**TIP:**

mix Fresco Enamel Fluo with Fresco Liquid to create a fluorescent base on the vestibular tooth area.



WORKFLOW EXAMPLE – MONOLITHIC LOWER RESTORATION

Fluo
70%

Vanilla
15%

White
10%

BaseA
5%

TIP:
*create individual color shades
by mixing the ceramic pastes with the
ICE Stains 3D by Enrico Steger.*

WORKFLOW EXAMPLE – MONOLITHIC LOWER RESTORATION



OPTIONAL TIP:

before Fresco Firing n. 1, check the uniform application of the fluorescent paste using a UV lamp.

WORKFLOW EXAMPLE – MONOLITHIC LOWER RESTORATION



After Fresco Firing n. 1

WORKFLOW EXAMPLE – MONOLITHIC LOWER RESTORATION



TIP:

mix the ICE Stains 3D by Enrico Steger with 3D Base Glaze to achieve a uniform application.

ICE STAINS 3D BY ENRICO STEGER

- *Three-dimensional stains with special depth effect*
- *For surface coloring of full zirconia, ceramics and pressed ceramics*
- *By working with the glazing mass directly on the restoration, a stain and glaze firing can be performed in one step*



WORKFLOW EXAMPLE – MONOLITHIC LOWER RESTORATION



Application of Fresco Enamel and Fresco Gingiva

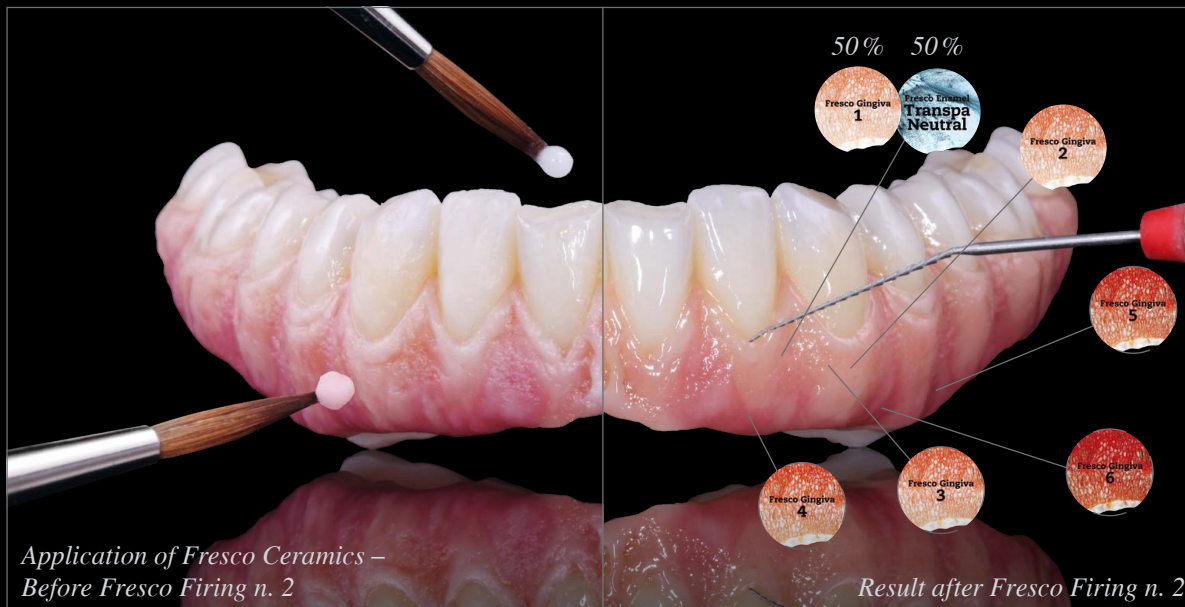
SET FRESCO ESSENTIAL

Set Fresco Essential includes six Fresco Gingiva and four Fresco Enamel shades. In order to individualize the ceramic pastes, it includes the two mixing liquids Fresco Gel and Fresco Liquid as well as all necessary processing tools: brushes in different sizes, a glass plate and the spatula for ceramic.

If needed, the colors Fresco Enamel Transpa Orange and Fresco Enamel Transpa Grey are also available.



WORKFLOW EXAMPLE – MONOLITHIC LOWER RESTORATION

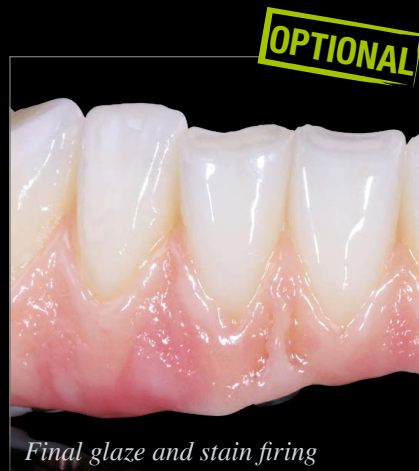


TIME-SAVING DUE TO MINIMAL SHRINKAGE

First, the darker areas of the gingiva are layered with the darker Fresco Gingiva pastes. Lighter shades are then applied to achieve a natural reproduction of the alveolar mucosa down to the marginal gingiva.

WORKFLOW EXAMPLE – MONOLITHIC LOWER RESTORATION

Fresco Firing n. 2 is conceived to maintain the layered surface structure as well as possible during the firing process. With Fresco Firing n. 2, zirconia structures of different sizes can be fired simultaneously: heating and cooling rates are the only parameters to be adapted, since they are directly related to the size and mass of the zirconia structure.



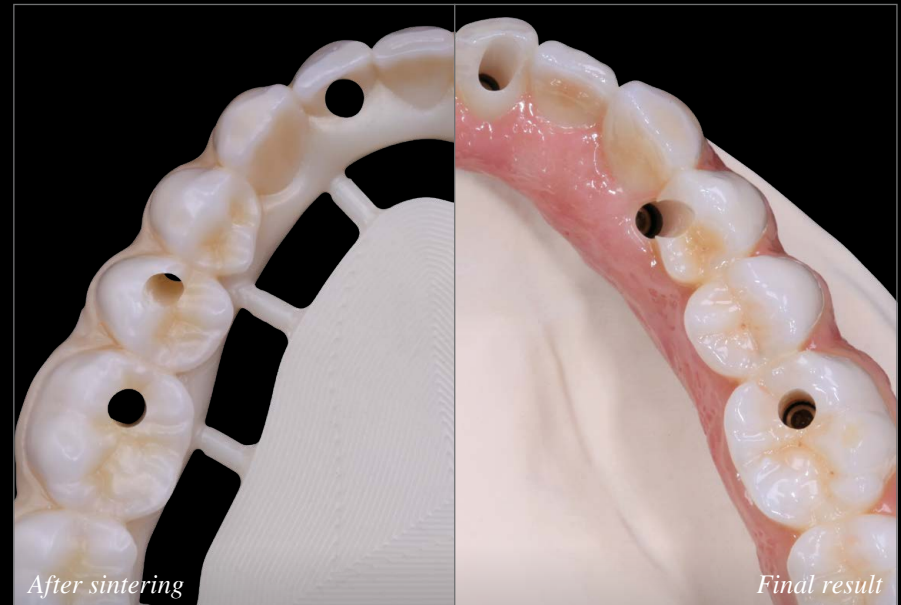
WORKFLOW EXAMPLE – MONOLITHIC LOWER RESTORATION



Example of structured gingiva



Example of smoother gingiva



After sintering

Final result

WORKFLOW EXAMPLE – MONOLITHIC UPPER RESTORATION



After Fresco Firing n. 1, the structure is further characterized with the ICE Stains 3D by Enrico Steger and the new Blue Lightning shade is applied to recreate a natural-looking incisal area. Due to its high dark percentage and the resulting color intensity, this shade can be applied thinly and very precisely.

WORKFLOW EXAMPLE – MONOLITHIC UPPER RESTORATION



WORKFLOW EXAMPLE – MONOLITHIC UPPER RESTORATION



TIP:

perform a manual polishing or optionally a glaze and stain firing to finalize your work.

WORKFLOW EXAMPLE – MONOLITHIC UPPER RESTORATION



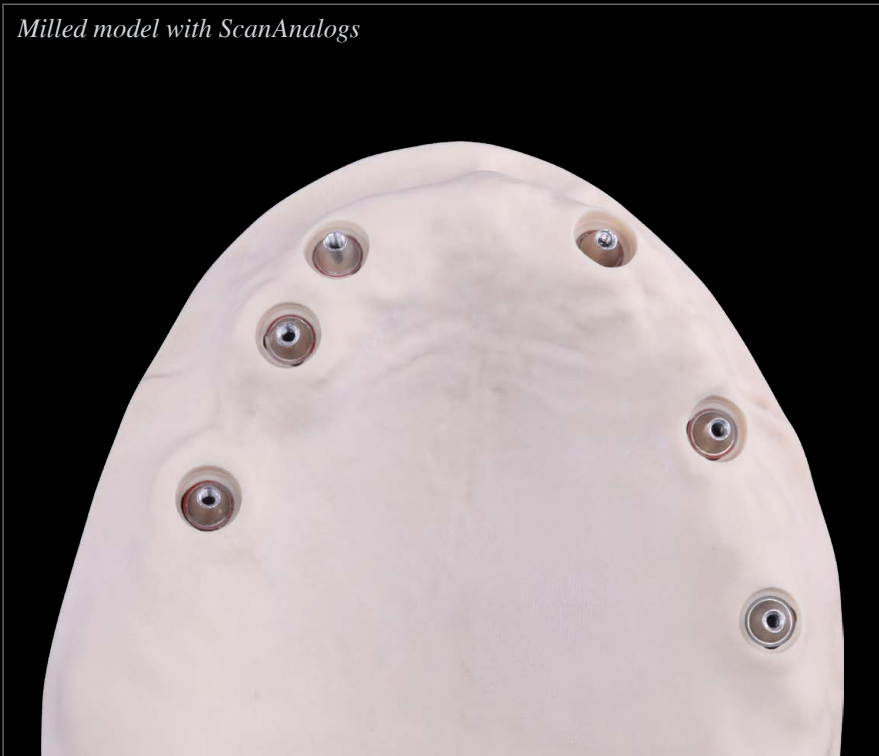
Fresco Enamel Fluo under UV lamp

WORKFLOW EXAMPLE – MONOLITHIC UPPER RESTORATION



DOUBLE SCREW BAR

Milled model with ScanAnalog



Gold-anodized upper bar

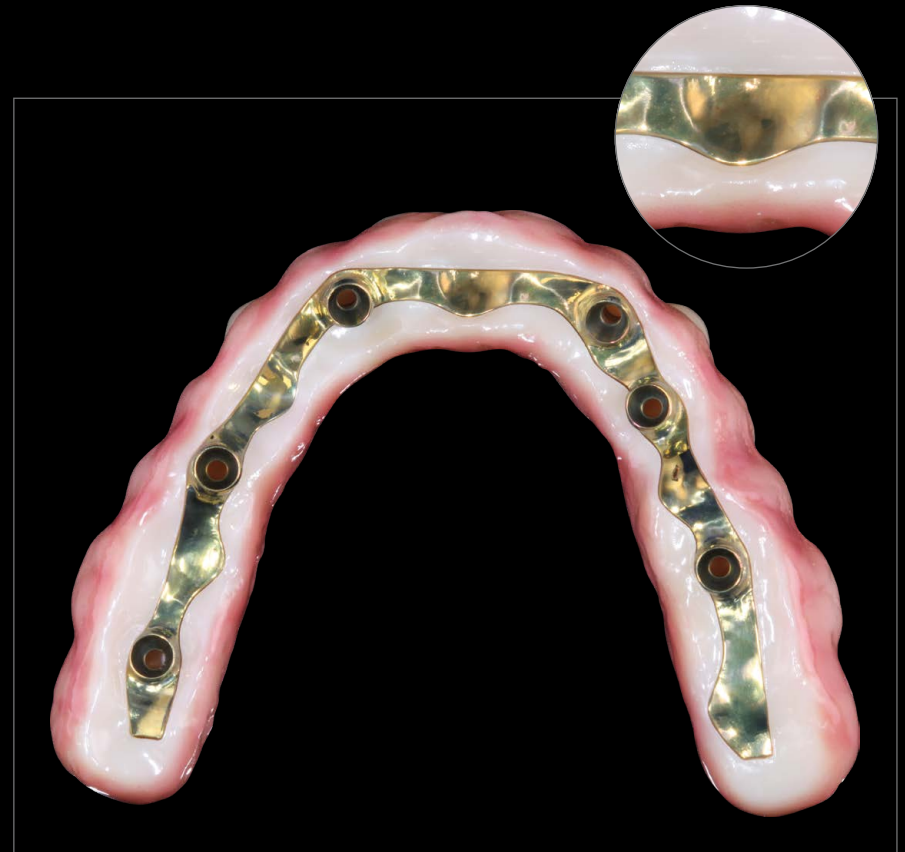


DOUBLE SCREW BAR

Final upper jaw Prettau® Bridge



DOUBLE SCREW BAR – PERFECT FIT



DOUBLE SCREW METAL TECHNIQUE



With the new Double Screw Metal function of the Zirkonzahn.Modellier software, additional screws can be integrated to screw the secondary structure to the titanium bar. Thanks to this new function, it is possible to visualize the screw virtual positions and generate virtual screw threads within the bar design. The 3D rendering also provides the optimal position of the screw channel in the primary structure, as well as the ideal fit of the screw head in the superstructure. The screw channels generated in the software are integrated in the bar during milling. The titanium bar is then screwed to the implants and the secondary structure to the bar.

The Double Screw Metal technique avoids unesthetic vestibular channels, ensuring the production of highly stable, bar-supported rehabilitations even in complex cases without compromising the full arch esthetics.



REAL CASE EXAMPLE:

MONOLITHIC VENEERS AND PARTIAL CROWNS MADE OF
PRETTAU® 3 DISPERSIVE® ZIRCONIA

REAL CASE EXAMPLE – MONOLITHIC VENEERS AND PARTIAL CROWNS MADE OF PRETTAU® 3 DISPERSIVE® ZIRCONIA



REAL CASE EXAMPLE – MONOLITHIC VENEERS AND PARTIAL CROWNS MADE OF PRETTAU® 3 DISPERSIVE® ZIRCONIA



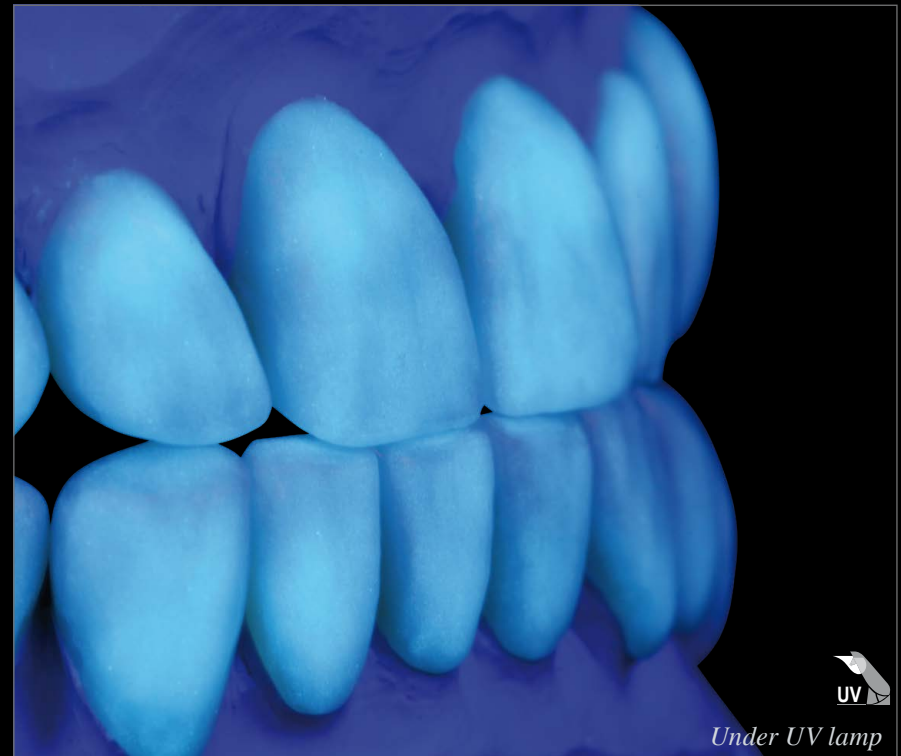
REAL CASE EXAMPLE – MONOLITHIC VENEERS AND PARTIAL CROWNS MADE OF PRETTAU® 3 DISPERSIVE® ZIRCONIA



After sintering

Final result

REAL CASE EXAMPLE – MONOLITHIC VENEERS AND PARTIAL CROWNS MADE OF PRETTAU® 3 DISPERSIVE® ZIRCONIA



EXAMPLE OF A MINIMAL CUTBACK





TIP:

important! Compare the final color with Zirkonzahn Shade Guide after glazing with 3D Base Glaze or after Fresco Firing n. 1 with Fresco Enamel Fluo.

Zirkonzahn®



ACHIEVE WONDERS

Zirkonzahn USA Inc. – Phone +1 800 989 8931 – Fax +1 800 699 1813 – infousa@zirkonzahn.com

Zirkonzahn Worldwide – 39030 Gais/South Tyrol – Phone +39 0474 066 680 – www.zirkonzahn.com – info@zirkonzahn.com

ENGLISH



WEAB3542US=

*This is an international advertisement. Not all products mentioned are available in all countries.
The product's field of application may vary depending on the country. Please contact your sales team for more information.
Copyright © Enrico Steger. Version: Jun 25, 2024*